

Reservdelskatalog elmoped Norsjö Carrier Electronic
Spare part catalogue electric moped Norsjö Carrier Electronic



[illegible]

[illegible]

[illegible]



Chassi
Chassis

Elmoped Norsjö Carrier Electric Electric moped Norsjö Carrier Electric



E15

E16

E17

E18

E19

Plan	Chassie	Plan	Chassie	Plan	Chassie	Plan	Chassie	Plan	Chassie
E15	000	E16	000	E17	000	E18	000	E19	000



Chassi
Chassis

Elmoped Norsjö Carrier Electric Electric moped Norsjö Carrier Electric



E20

E21

E22

E23

E24

Plan

Chassie

Plan

Chassie

Plan

Chassie

Plan

Chassie

Plan

Chassie

E20

000

E21

000

E22

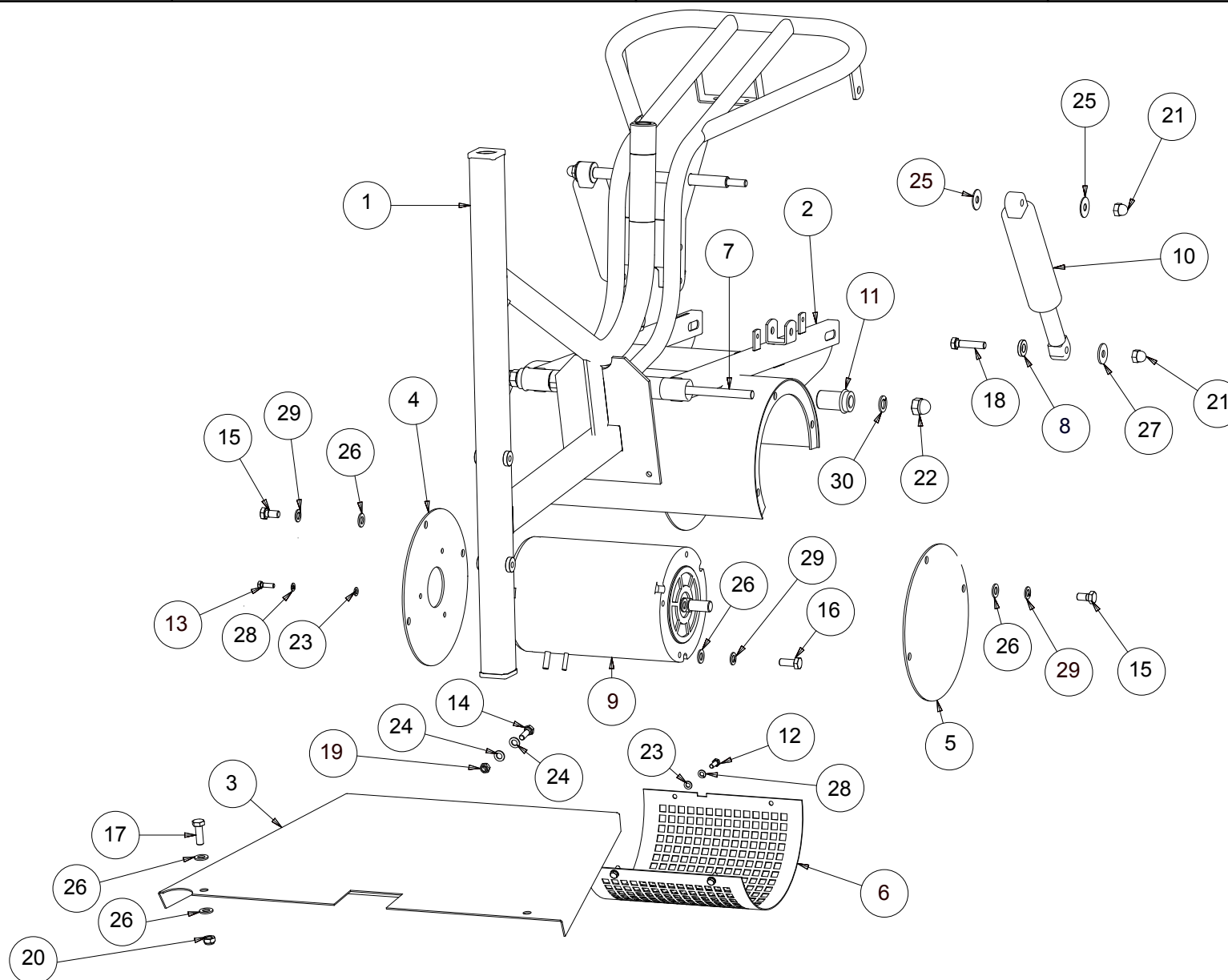
000



E23

000

E24

000



	Delar/Parts Bakvagn Rear Frame	Chassis No 000-	Typ/Type 	Sida/Side E1
---	--	-------------------------------	---	----------------------------

Pos	Artikelnr/ Part No	Ant/ No	Ändrad/ Changed	Beskrivning	Description	
1	69015-0070	1		Bakram Silver	Rear frame Silver	
1	69015-0050	1		Bakram Gul Post	Rear frame Postal yellow	
1	69015-0090	1		Bakram Valfri färg	Rear frame Optional colour	
2	69030-1070	1		Baksving Silver inkl. Silentblock	Level arm Silver incl. Silentblock	
2	69030-1050	1		Basving Gul Post inkl. Silentblock	Level arm Postal yellow incl. Silentblock	
2	69030-1090	1		Baksving Valfri färg inkl. Silentblock	Level arm Optional colour incl. Silentblock	
3	69034-0000	1		Fotpåt	Foot plate	
4	69032-0074	1		Gavelplåt H Silver	Gable plate H Silver	
4	69032-0054	1		Gavelplåt H Gul Post	Gable plate H Postal yellow	
4	69032-0094	1		Gavelplåt H Valfri färg	Gable plate H Optional colour	
5	69032-0075	1		Gavelplåt V Silver	Gable plate V Silver	
5	69032-0055	1		Gavelplåt V Gul Post	Gable plate V Postal yellow	
5	69032-0095	1		Gavelplåt V Valfri färg	Gable plate V Optional colour	
6	69032-0076	1		Skyddsplåt Silver	Protecting plate Silver	
6	69032-0056	1		Skyddsplåt Gul Post	Protecting plate Postal yellow	
6	69032-0096	1		Skyddsplåt Valfri färg	Protecting Plate Optional colour	
7	69037-0000	1		Axel Baksving	Axle Level arm	
8	68100-0409	2		Stötdämpar Distans	Shock absorber Spacer	
9	44500-5000	1		Motor XP-1613	Engine XP-1613	
10	68100-0022	2		Stötdämpare	Shock absorber	
11	49125-0011	2		Silentblock	Silentblock	
12	13106-0016	4		Sexkantsskruv M6x16 FZB	Hexagonal screw M6x16 FZB	
13	13106-0020	3		Sexkantsskruv M6x20 FZB	Hexagonal screw M6x20 FZB	
14	13108-0025	2		Sexkantsskruv M8x25 FZB	Hexagonal screw M8x25 FZB	
15	13110-0020	6		Sexkantsskruv M10x20 FZB	Hexagonal screw M10x20 FZB	
16	13110-0025	4		Sexkantsskruv M10x25 FZB	Hexagonal screw M10x25 FZB	
17	13110-0030	2		Sexkantsskruv M10x30 FZB	Hexagonal screw M10x30 FZB	
18	13110-0045	2		Sexkantsskruv M10x45 FZB	Hexagonal screw M10x45 FZB	
19	16308-0000	2		Låsmutter M8	Lock nut M8	
20	16310-0000	2		Låsmutter M10	Lock nut M10	
21	16410-0000	4		Kupolmutter M10 FZB	Domed cap nu M10 FZB	
22	16414-0000	2		Kupolmutter M14	Domed cap nut M14	
23	17106-0012	11		Planbricka 6,4x12x1,6 FZB	Plane washer 6.4x12x1.6 FZB	
24	17108-0000	4		Planbricka 8,4x16x1,5 FZB	Plane washer 8.4x16x1.5 FZB	
25	17110-0025	4		Planbricka 10,5x25,0x1,5 FZB	Plane washer 10.5x25.0x1.5 FZB	
26	17110-0018			Planbricka 10x18x1,5 FZB	Plane washer 10x18x1.5 FZB	
27	17110-0025			Fjäderbricka 28,29,30	Spring washer 28, 29, 30	



Delar/Parts

**Framvagn
Front Frame**

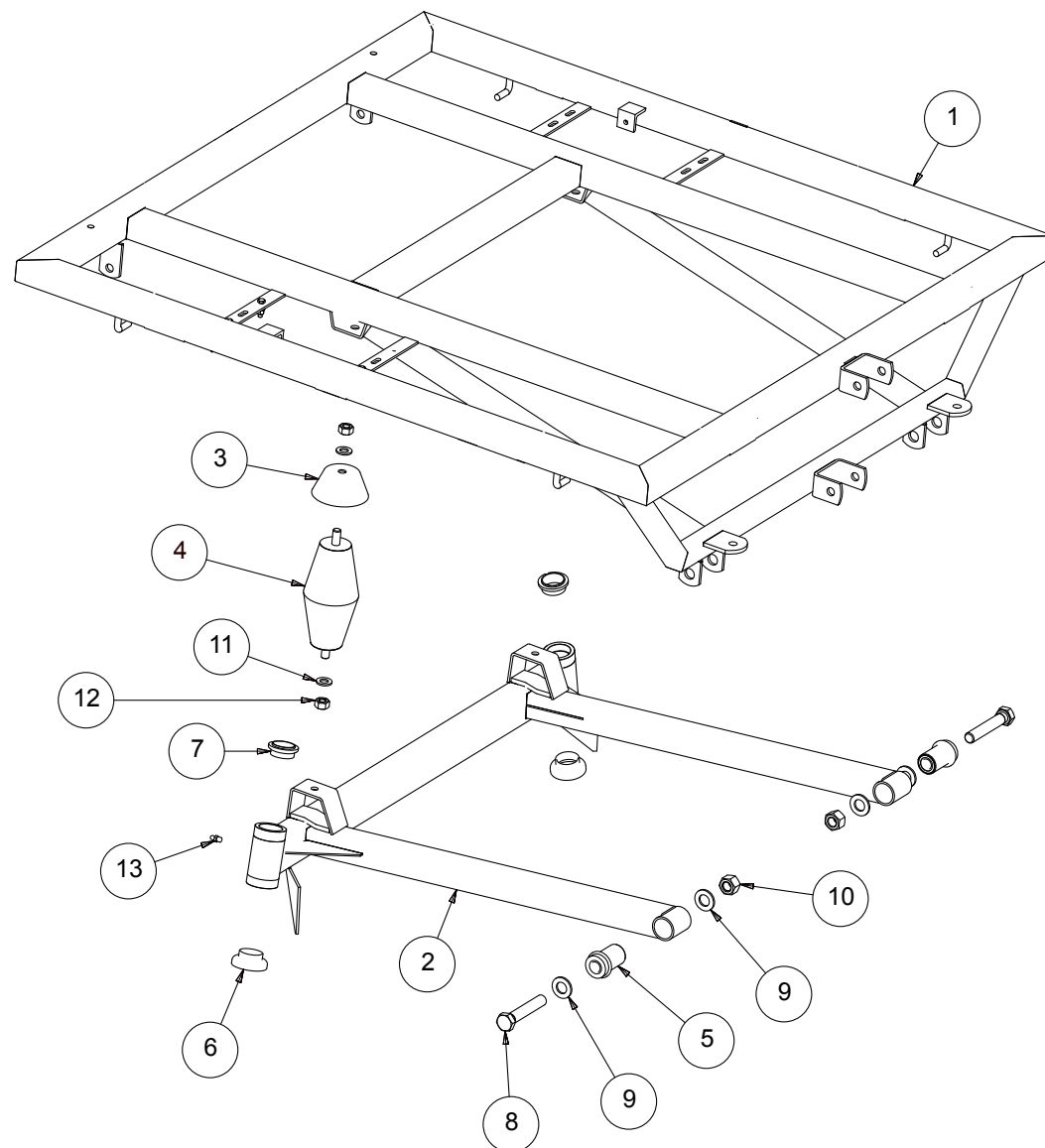
Chassis No

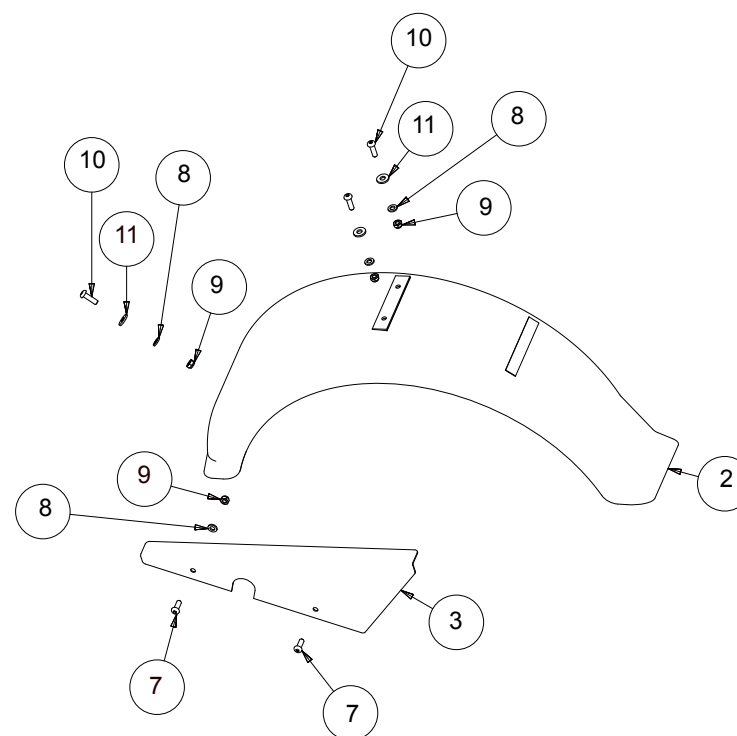
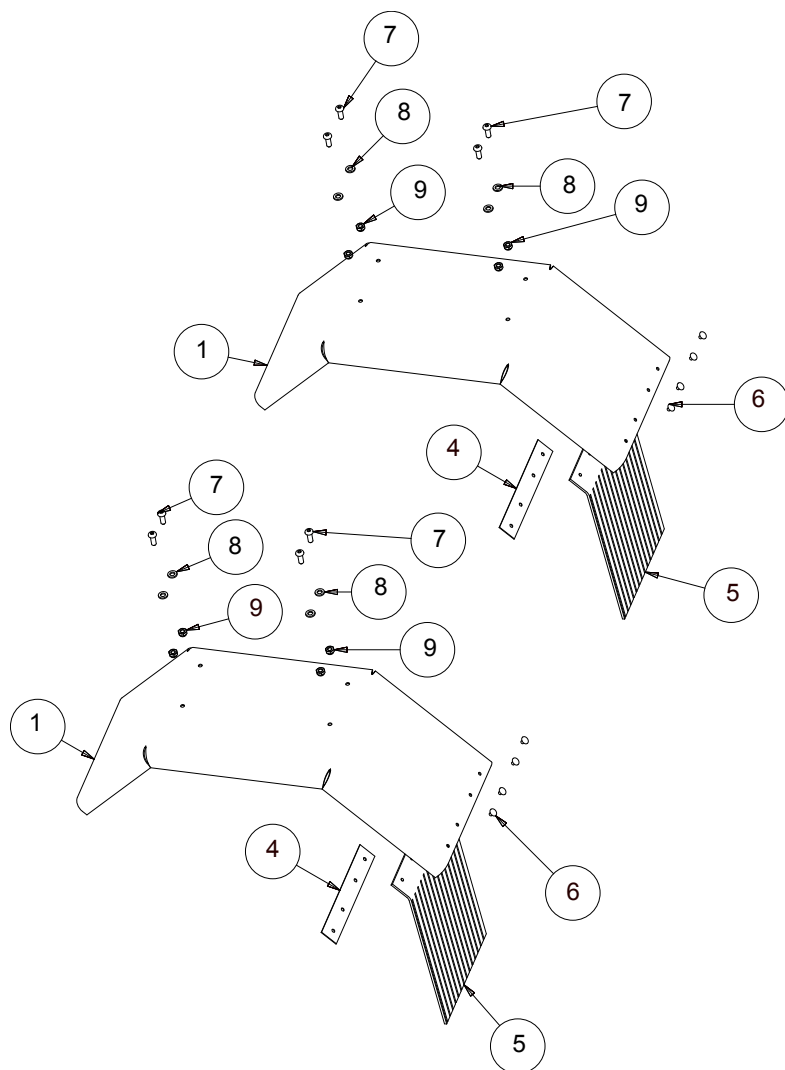
000-

Typ/Type

NORSJÖ
*Electronic
Carrier*

Sida/Side

E2





Delar/Parts

**Flakram
Platform Frame**

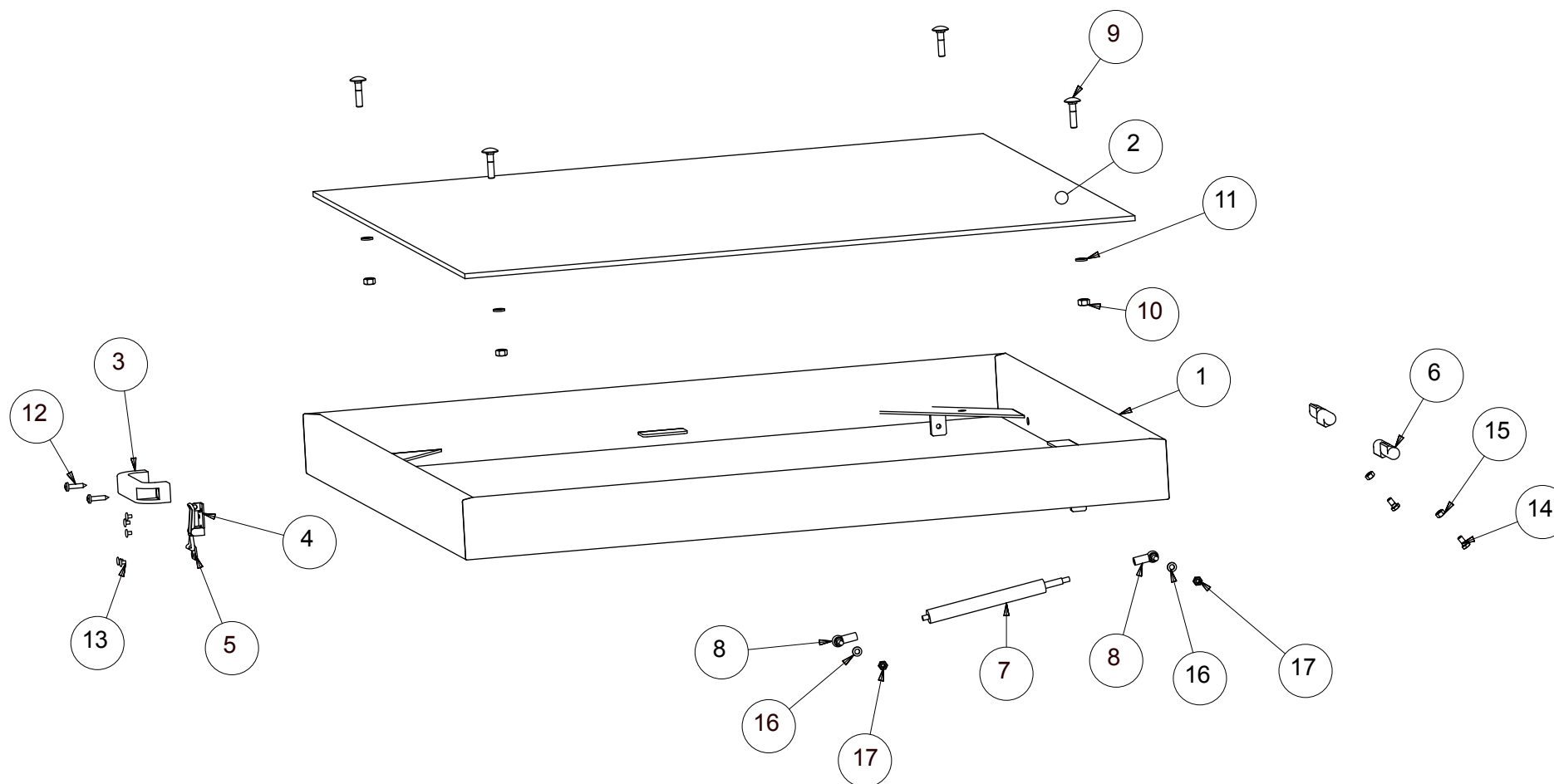
Chassis No

000-

Typ/Type

NORSJÖ
*Electronic
Carrier*

Sida/Side

E4



Delar/Parts

Flakram stål/galler
Platform Frame steel/grating

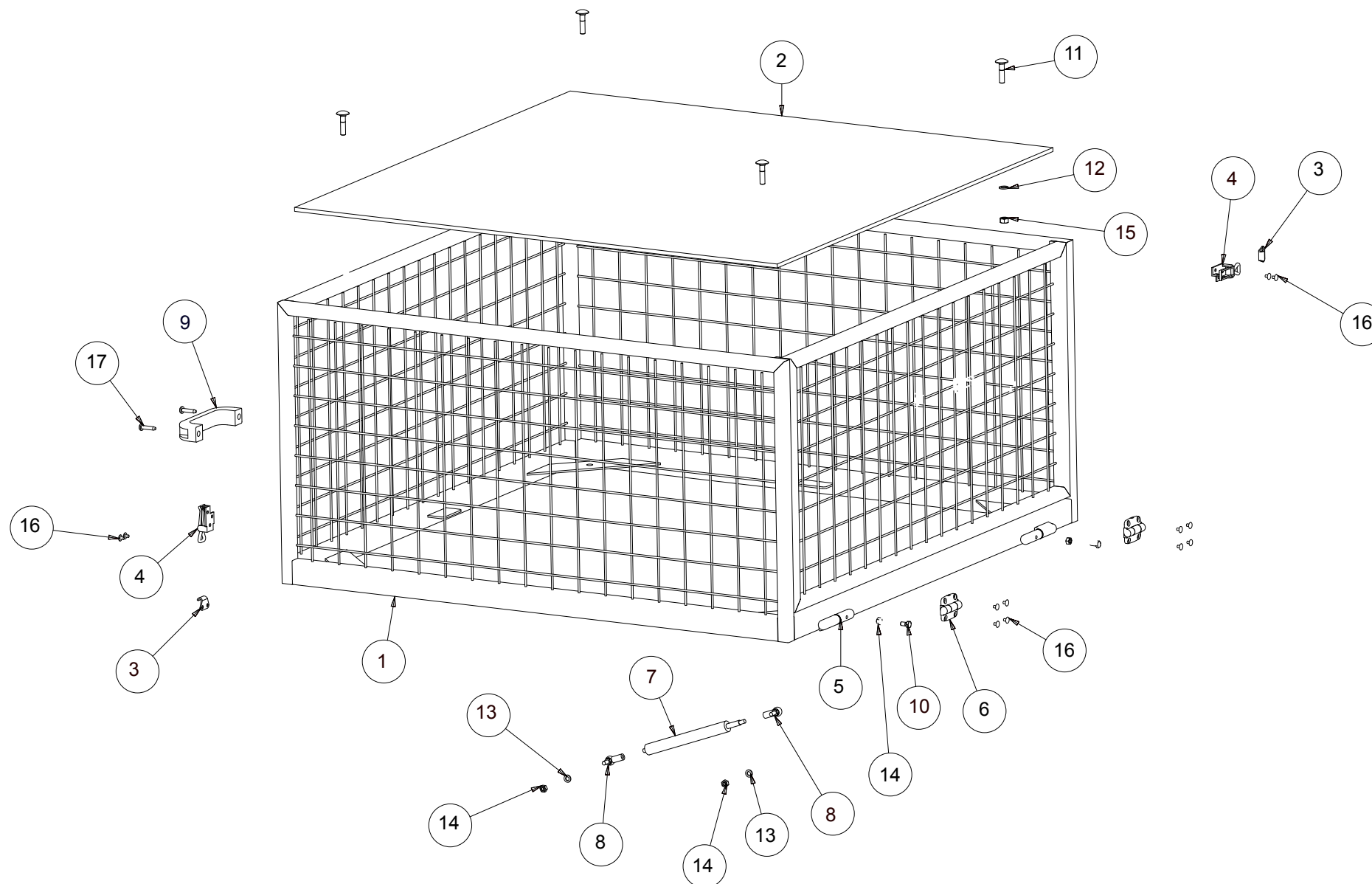
Chassis No



000-

Typ/Type

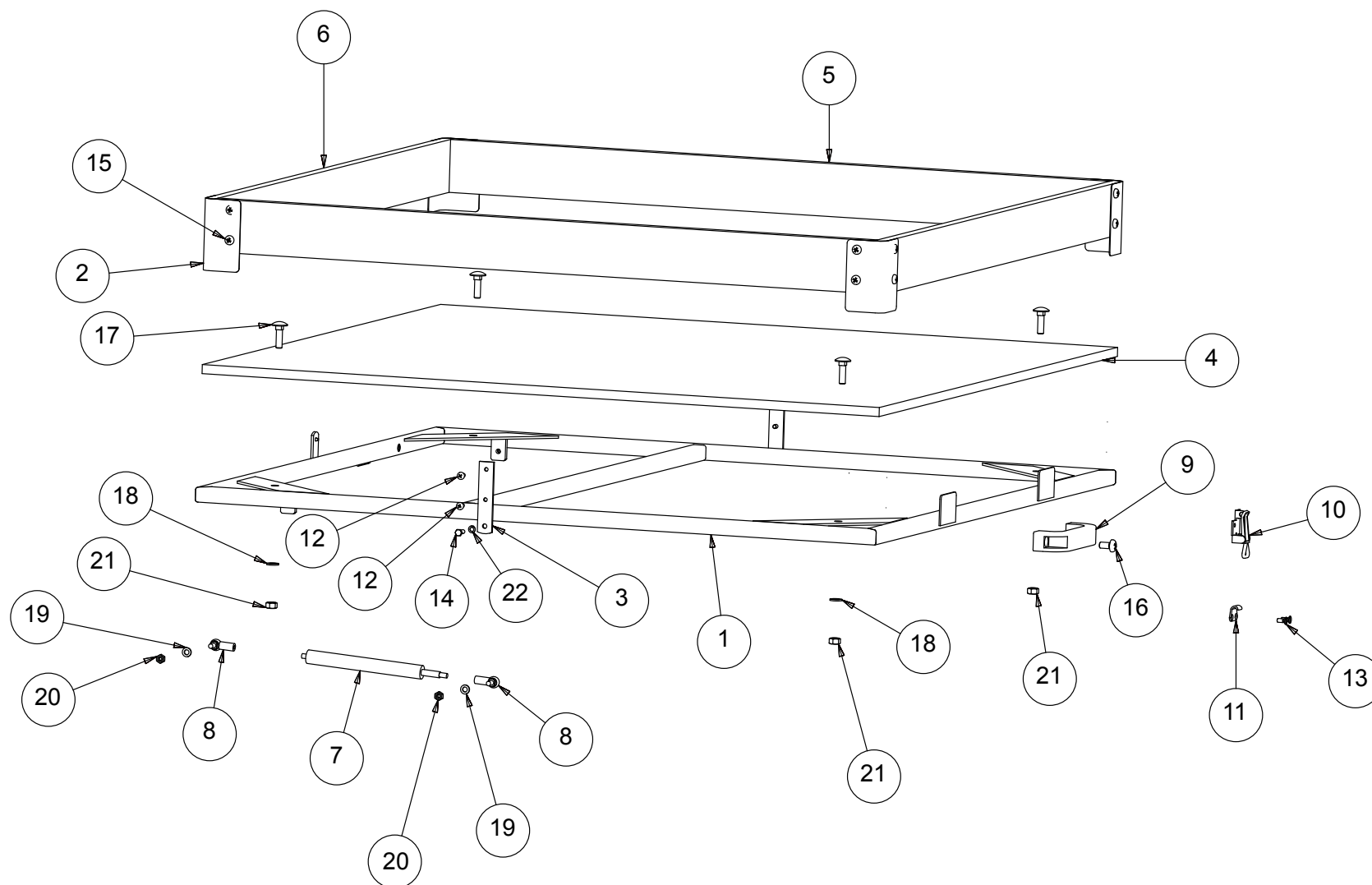
NORSJÖ
Carrier

Sida/Side

E5

	Delar/Parts Flakram stål/galler Platform Frame steel/grating	Chassis No 000-	Typ/Type 	Sida/Side E5
---	--	---------------------------	---	------------------------

Pos	Artikelnr/ Part No	Ant/ No	Ändrad/ Changed	Beskrivning	Description	
1	68023-0071	1		Flakram Stålgaller STD Silver 950x950	Platform frame Steel grating STD Silver 950x950	
1	68223-0071	1		Flakram Stålgaller Lång Silver 950x1200	Platform frame Steel grating Long Silver 950x1200	
1	68023-0091	1		Flakram Stålgaller STD Valfri färg 950x950	Platform frame Steel grating STD Optional colour 950x950	
1	68223-0091	1		Flakram Stålgaller Lång Valfri färg 950x1200	Platform frame Steel grating, Long Optional colour 950x1200	
1	68023-0071	1		Flakram Plåt STD Silver 950x950	Platform frame Steel plate STD Silver 950x950	
1	68223-0071	1		Flakram Plåt Lång Silver 950x1200	Platform frame Steel plate Long Silver 950x1200	
1	68023-0091	1		Flakram Plåt STD Valfri färg 950x950	Platform frame Steel plate STD Optional colour 950x950	
1	68223-0091	1		Flakram Plåt Lång Valfri färg 950x1200	Platform frame Steel plate, Long Optional colour 950x1200	
2	68100-1113	1		Lastflakbotten Plyfa 950x950	Platform bottom Plywood 950x950	
2	68100-1114	1		Lastflakbotten Plyfa 950x1200	Platform bottom Plywood 950x1200	
3	42307-0000	1		Bygelhandtag	Handle	
4	11000-0091	1		Excenterbygel	Eccentric strap	
5	11000-0092	1		Excenterhake	Eccentric hook	
6	11000-0240	2		Svetsgångjärn	Welded hinge	
7	53016-0000	2		Gasdämpare 200N	Gas shock 200N	
8	70015-0000	4		Vinkellänk M6	Angular toggle joint M6	
9	13908-0030	4		Vagnsbult M8x30	Carriage bolt M8x30	
10	16108-0000	4		Mutter M8	Nut M8	
11	17108-0000	4		Bricka 8.4x16x1.5	Washer 8.4x16x1.5	
12	13855-0025	2		Plåtskruv 5.5x25	Self-tapping screw 5.5x25	
13	17840-4008	4		Blindnit 4x8 Stål/Stål	Blind rivet 4x8 Steel/Steel	
14	13106-0012	2		Sexkantsbult M6x12	Hexagonal bolt M6x12	
15	16106-0000	2		Mutter M6	Nut M6	
16	17106-0000	4		Planbricka M6	Plane washer M6	
17	17306-0000	4		Låsmutter M6	Lock nut M6	
	68100-1121			Aluminiumflak STD 950x950	Aluminium platform STD 950x950	
	68100-1120			Aluminiumflak Lång 950x1200	Aluminium platform Long 950x1200	





Delar/Parts

Framhjul/broms
Front wheel/brake

Chassis No

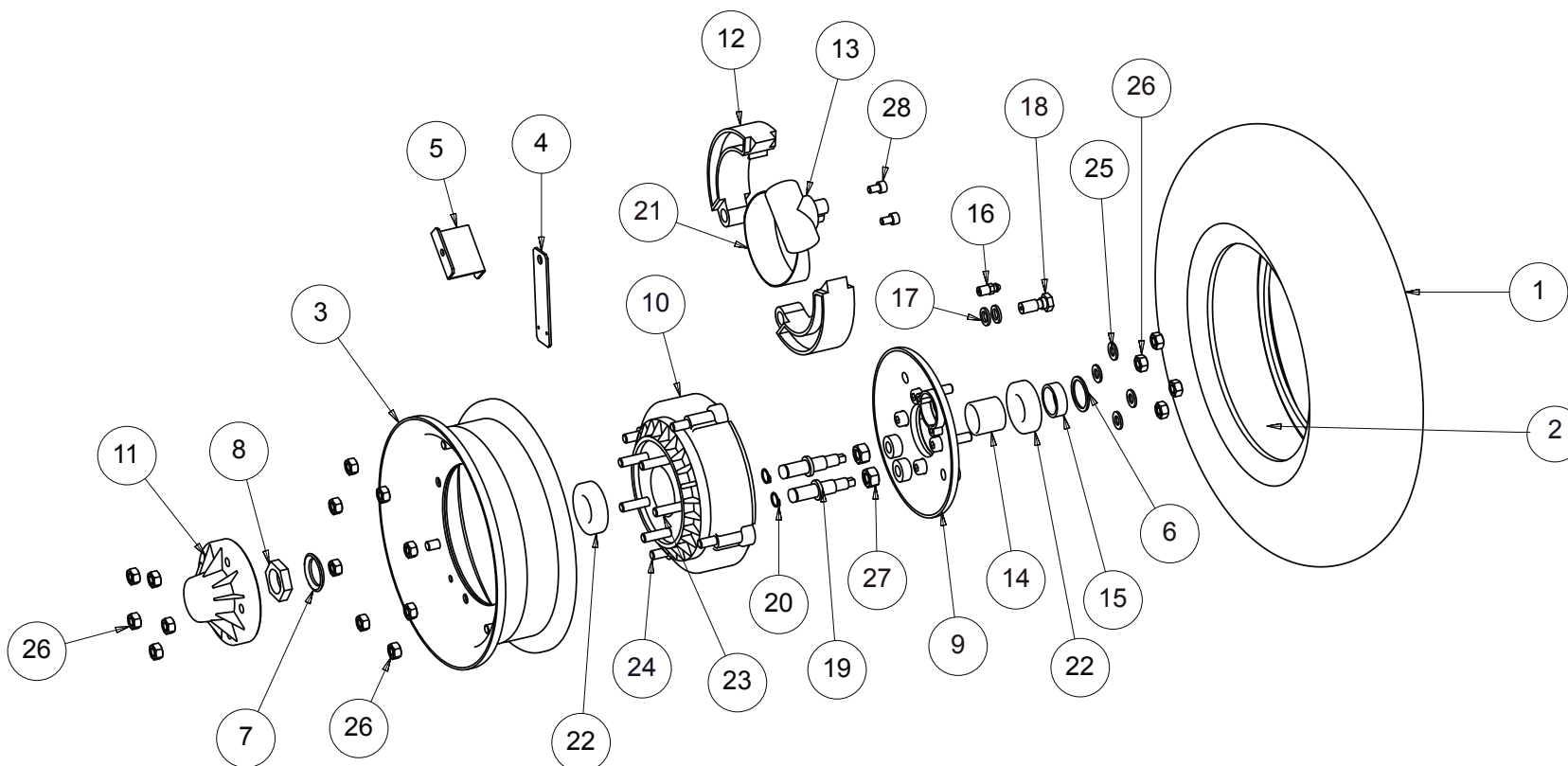
000-



Typ/Type

NORSJÖ
Electronic
Carrier

Sida/Side

E7



	Delar/Parts Framhjul/broms Front wheel/brake	Chassis No 000-	Typ/Type 	Sida/Side E7
---	--	---------------------------	---	------------------------

Pos	Artikelnr/ Part No	Ant/ No	Ändrad/ Changed	Beskrivning	Description	
1	12085-0180	2		Däck 4,00x8 P30 Heidenau Sommar	Tyre 4.00x8 P30 Heidenau Summer	
1	12085-0150	2		Däck 4,00x8 c161	Tyre 4.00x8 c161	
1	12550-0010	2		Däck 4,00x8 c161 Vinterdäck med dubb	Tyre 4.00x8 c161 Winter with studs	
1	12085-0160	2		Däck 4,00x8 c168	Tyre 4.00x8 c168	
1	12550-0012	2		Däck 4,00x8 c168 Vinterdäck med dubb	Tyre 4.00x8 c168 Winter with studs	
2	12088-0140	2		Slang 4,00x8 TR87	Innertube 4.00x8 TR87	
3	53720-0070	2		Fälg 8" Delbar Silver	Wheel rim 8" Silver	
4	68100-0426	1		Givarplåt Sensor Hastigmätare	Gauge plate Sensor Speedometer	
5	68100-0427	1		Konsol Magnet Hastigmätare	Support Magnet Speedometer	
6	66113-0012	1		Bricka	Washer	
7	53700-0004	1		Låsbricka	Locking washer	
8	53700-0005	1		Mutter	Nut	
9	53700-0007	1		Bromssköld inkl. pos 12-13, 19-21, 29-31	Back plate incl. pos 12-13, 19-21, 29-31	
10	53700-0008	1		Bromstrumma inkl.Pos. 14,22	Brake drum incl. pos 14, 22	
11	53700-0009	1		Navkapsel	Hub cap	
12	53700-0010	2		Bromsbackar Par ej Fjäder	Brake shoes Pair, non spring	
13	53700-0011	1		Bromscylinder	Brake cylinder	
14	53700-0020	1		Distans Nav Inre	Spacer Hub Inner	
15	53700-0006	1		Distans Nav	Spacer Hub	
16	53700-0021	1		Luftnippel	Air nipple	
17	53710-0042	4		Kopparbricka 10x15x2mm	Copper washer 10x15x2mm	
18	53700-0003	2		Banjobult Fingänga	Banjo bolt Fine thread	
18	53710-0035	2		Banjobult Grovgänga	Banjo bolt Coarse screw thread	
19	53700-0022	4		Excenter	Excentric	
20	53700-0023	2		Låsring	Lock ring	
21	53700-0012	1		Fjäder Bromsback	Spring Brake shoe	
22	20005-0006	2		Lager	Bearing	
23	13108-0030	4		Sexkantsskruv M8x30 behöver modf.	Hexagonal screw M8x30 needs modification	
24	13108-0040	5		Sexkantsskruv M8x40 behöver mogf.	Hexagonal screw M8x40 needs modification	
25	53706-0000	30		Fjäderbricka	Spring washer	
26	53705-0000	30		Mutter M8	Nut M8	
27	53700-0024	2		Mutter	Nut	
28	15106-0010	2		Insex M6x10	Hexagonal bolt M6x10	



Delar/Parts

Bakhjul/broms
Back wheel/brake

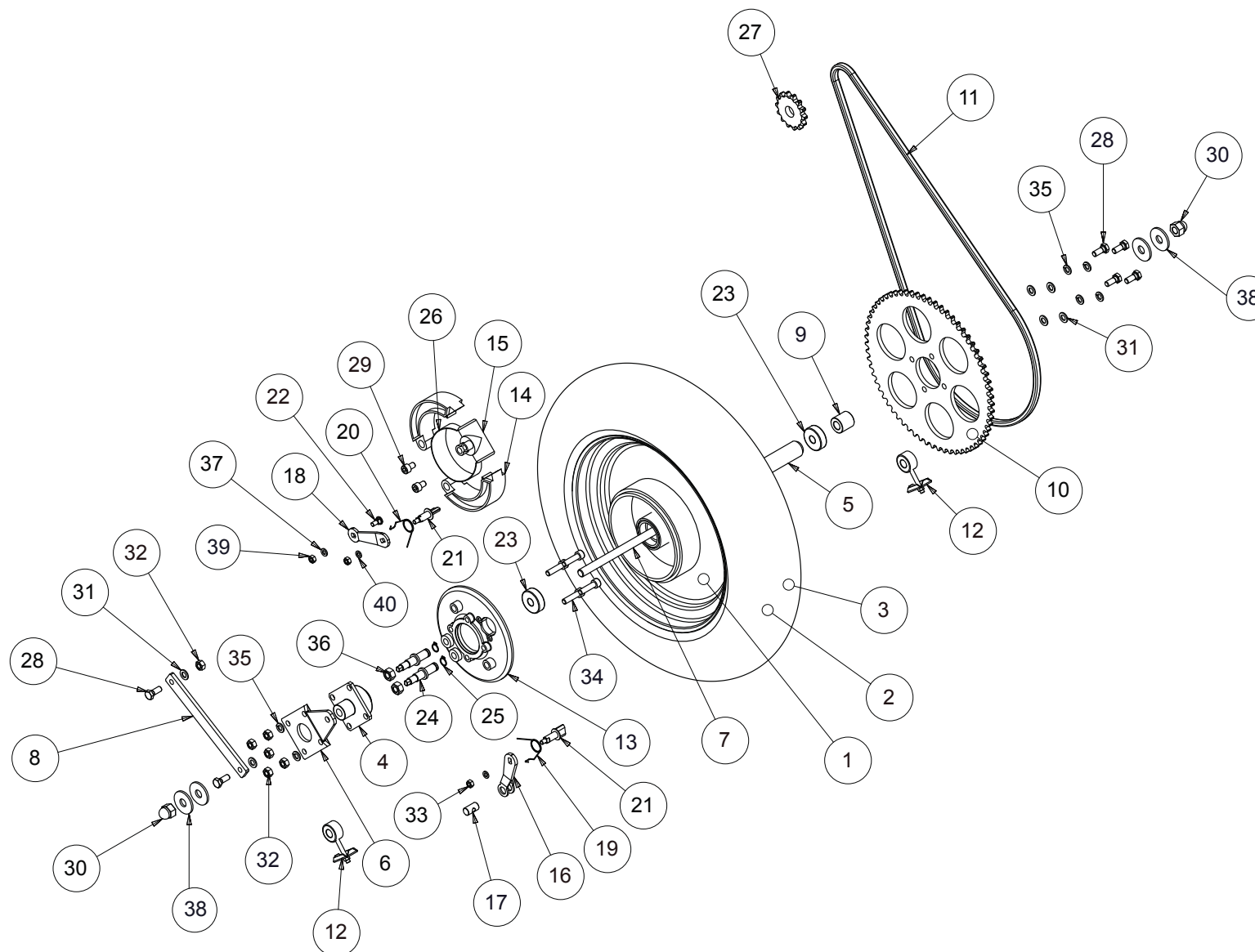
Chassis No

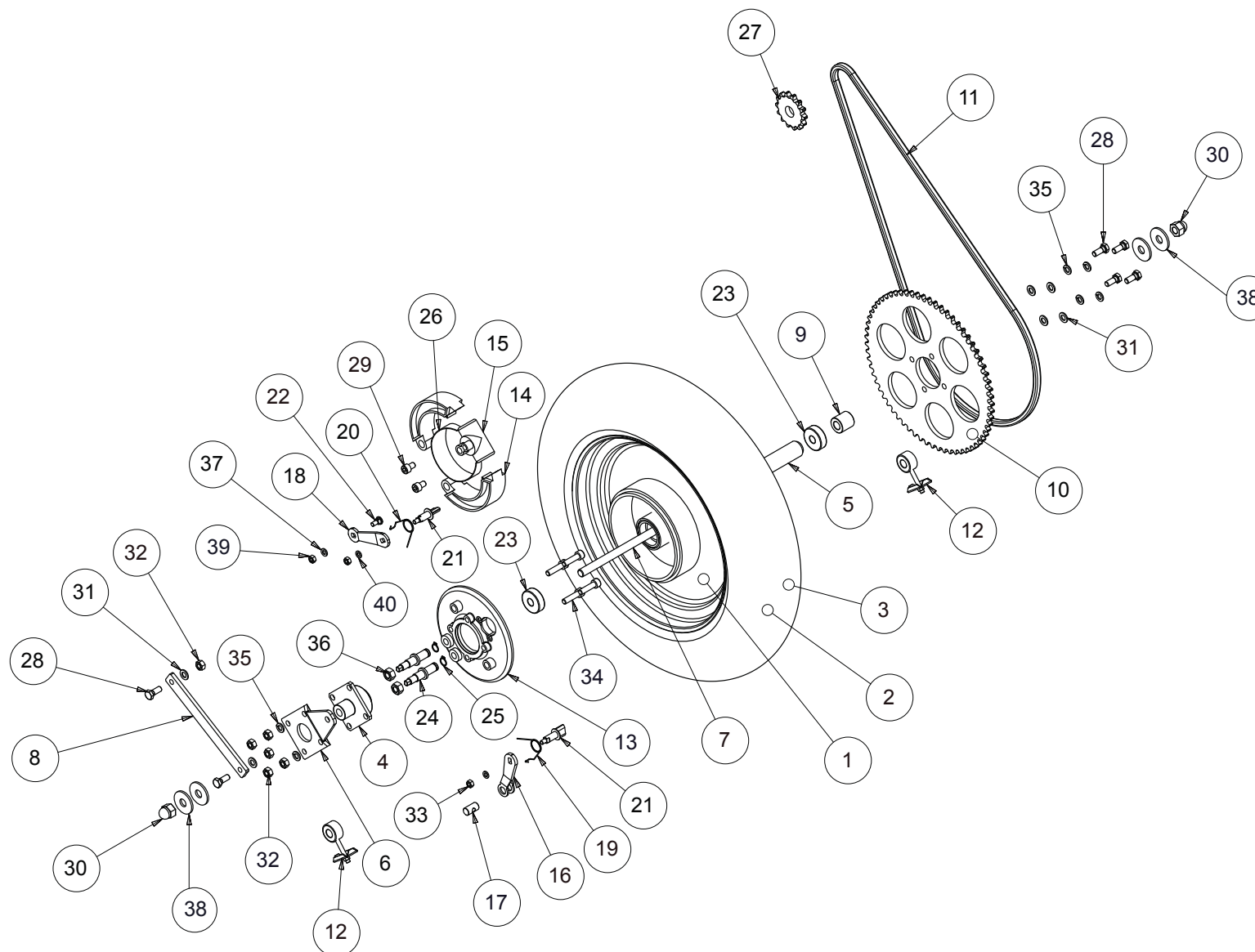
000-

Typ/Type

NORSJÖ
Carrier

Sida/Side

E8:1





Delar/Parts

**Styrinrättning
Steering**

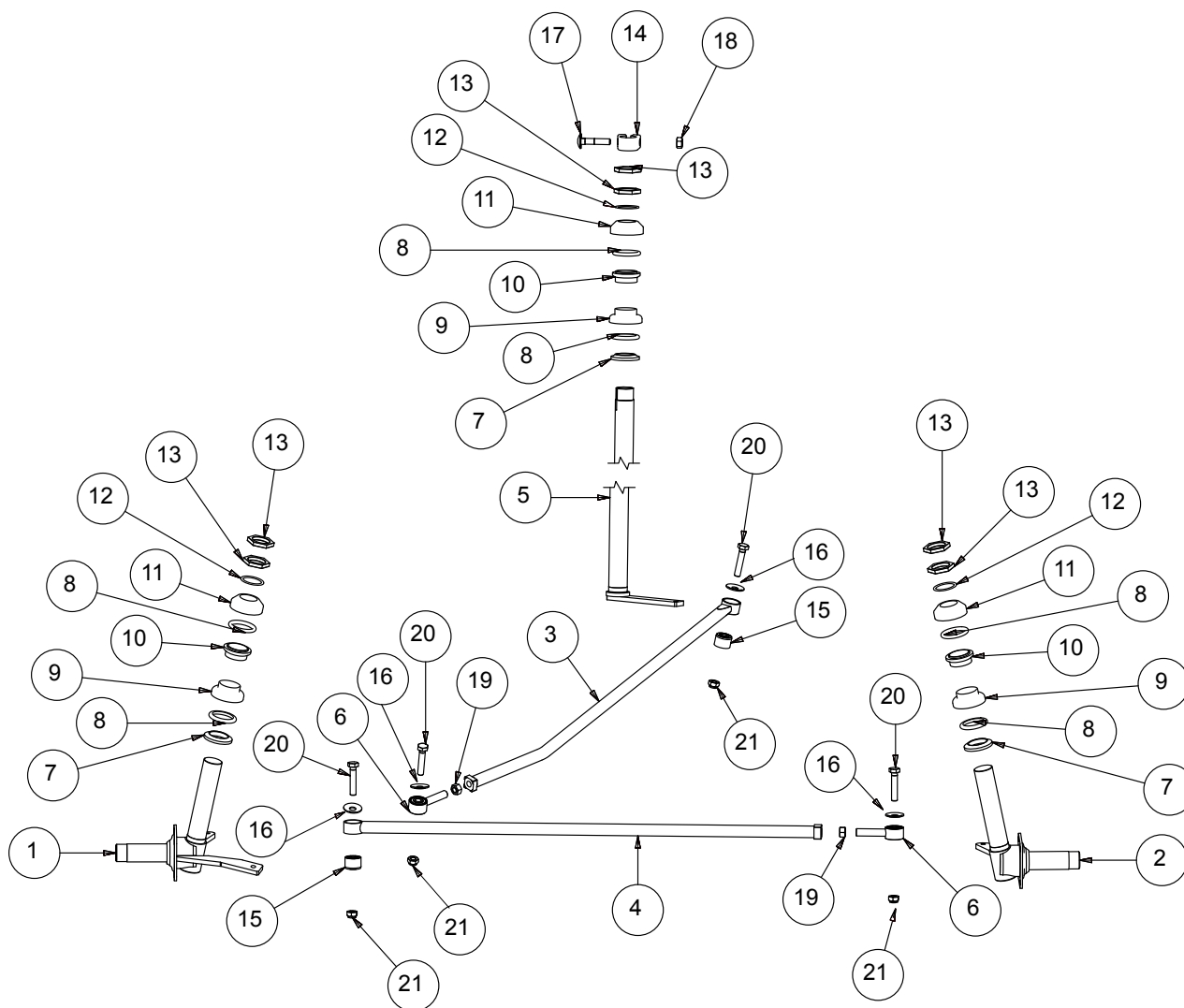
Chassis No

000-

Typ/Type

NORSJÖ
*Electronic
Carrier*

Sida/Side

E9



Delar/Parts

**Styre/sadel
Handlebar/saddle**

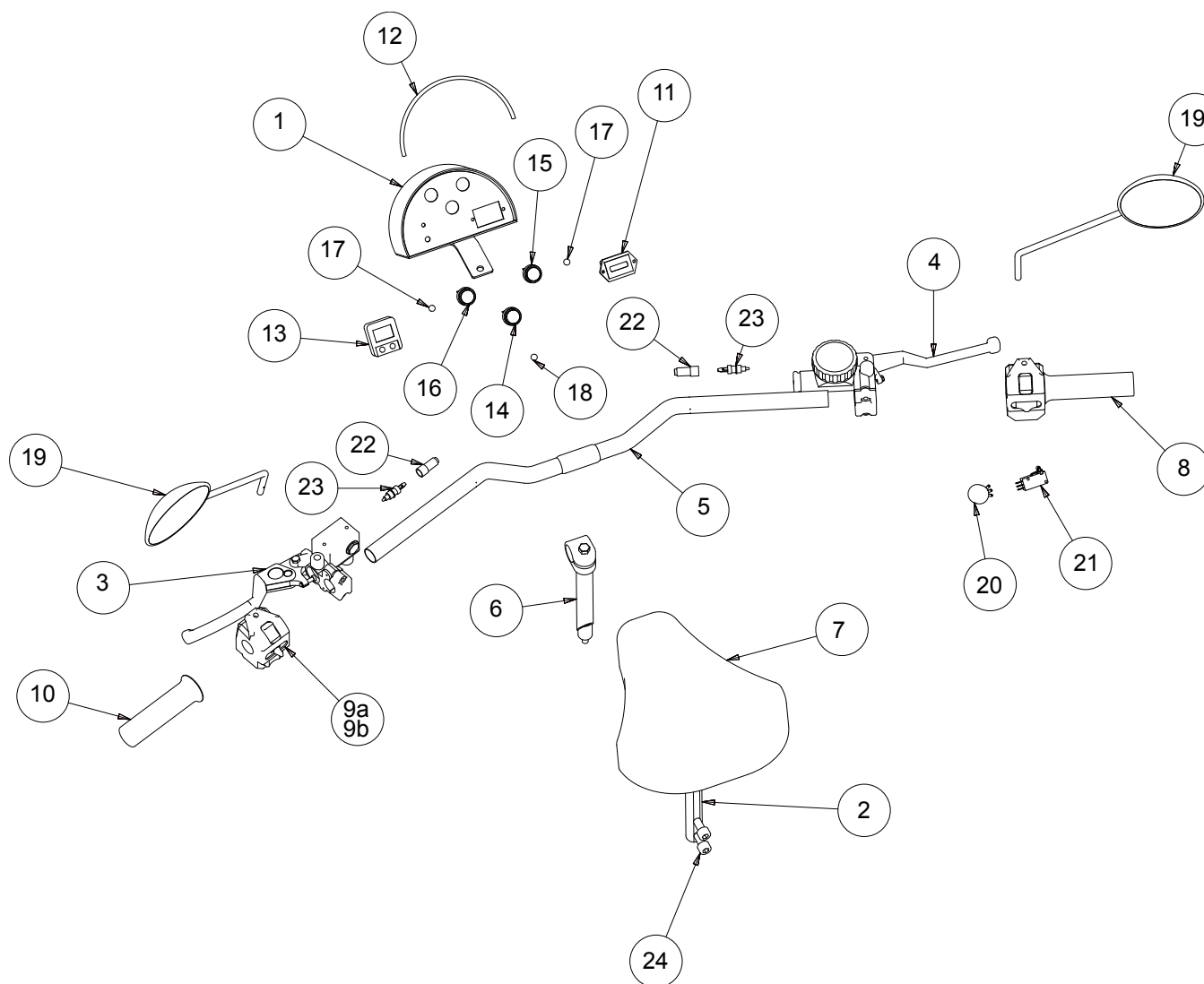
Chassis No



000-

Typ/Type

NORSJÖ
Carrier

Sida/Side

E10

	Delar/Parts Styre/sadel Handlebar/saddle	Chassis No 000-	Typ/Type 	Sida/Side E10
---	--	---------------------------	---	-------------------------

Pos	Artikelnr/ Part No	Ant/ No	Ändrad/ Changed	Beskrivning	Description	
1	68025-0082	1		Instrumentpanel Hus	Instrument panel housing	
1	68025-0081	1		Instrumentpanel Plåt Framsida	Instrument panel Steel plate Front	
2	68050-0010	1		Sadelstolpe	Saddle post	
3	68100-0010	1		Bromshandtag Vänster	Brake handle Left	
4	68100-0020	1		Bromshandtag Höger	Brake handle Right	
5	68100-0350	1		Styre	Handlebar	
6	47873-0000	1		Styrstam	Stem	
7	47253-0000	1		Sadel	Saddle	
8	40200-0100	1		Omkopplare H Ljus Av/På, Fram/Back gashantag	Selector switch R Light On/Off, Front/Rear throttle twist-grip	
9a	40201-0010	1		Omkopplare V Hel/Halv, Blinkers, Tuta	Selector switch L Full/half, Indicator, Horn	
9b	40800-0002	1		Bakstycke	Back piece	
10	40201-0020	1		Handtag	Handle	
11	44530-0002	1		Batteriindikator	Battery indicator	
12	42035-0000	1		List	Edging strip	
13	68100-0021	1		Hastighetsmätare	Speedometer	
14	44304-0000	1		Kontrollampa Blå	Indicator lamp Blue	
15	44303-0000	1		Kontrollampa Röd	Indicator lamp Red	
16	44302-0000	1		Kontrollampa Grön	Indicator lamp Green	
17	45045-0000	2		Glödlampa 12V 1,2W	Bulb 12V 1.2W	
18	45336-0000	1		Glödlampa 24V 1,2W	Bulb 24V 1.2W	
19	65209-0000	1		Backspegel H/V	Rear view mirror R/L	
20	40200-0003	1		Potentiometer	Potentiometer	
21	40115-0015	1		Microbrytare	Microswitch	
22	68100-0018	2		Gummiskydd	Rubber protection	
23	68100-0019	2		Bromsljuskontakt	Brake light switch	
24		2		Insexskruv M8	Socket head cap screw M8	



Delar/Parts

Belysning/blinkers
Lights/indicator

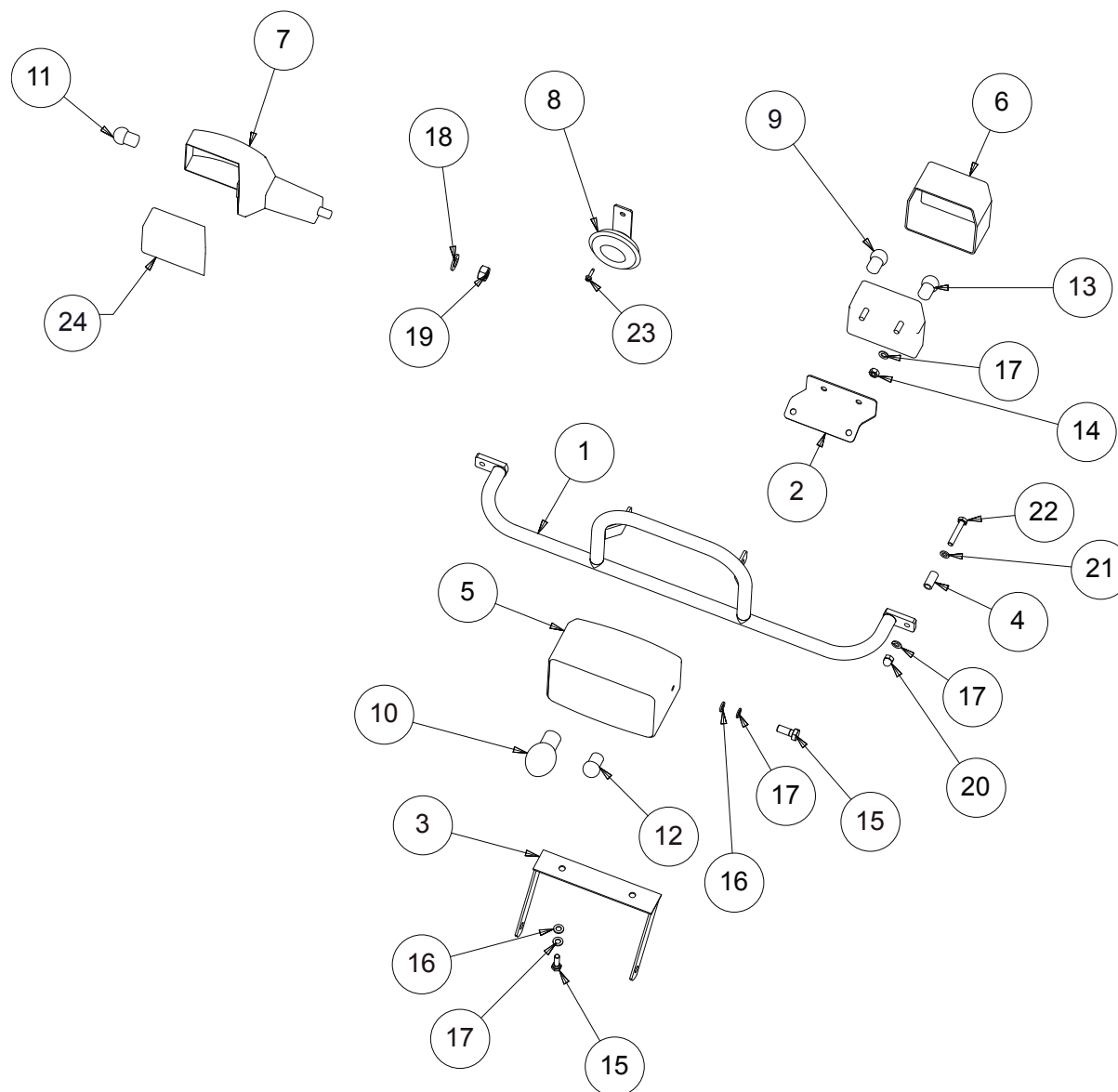
Chassis No

000-

Typ/Type

NORSJÖ
Electronic
Carrier

Sida/Side

E11



Delar/Parts

**Belysning/blinkers
Lights/indicator**

Chassis No

000-

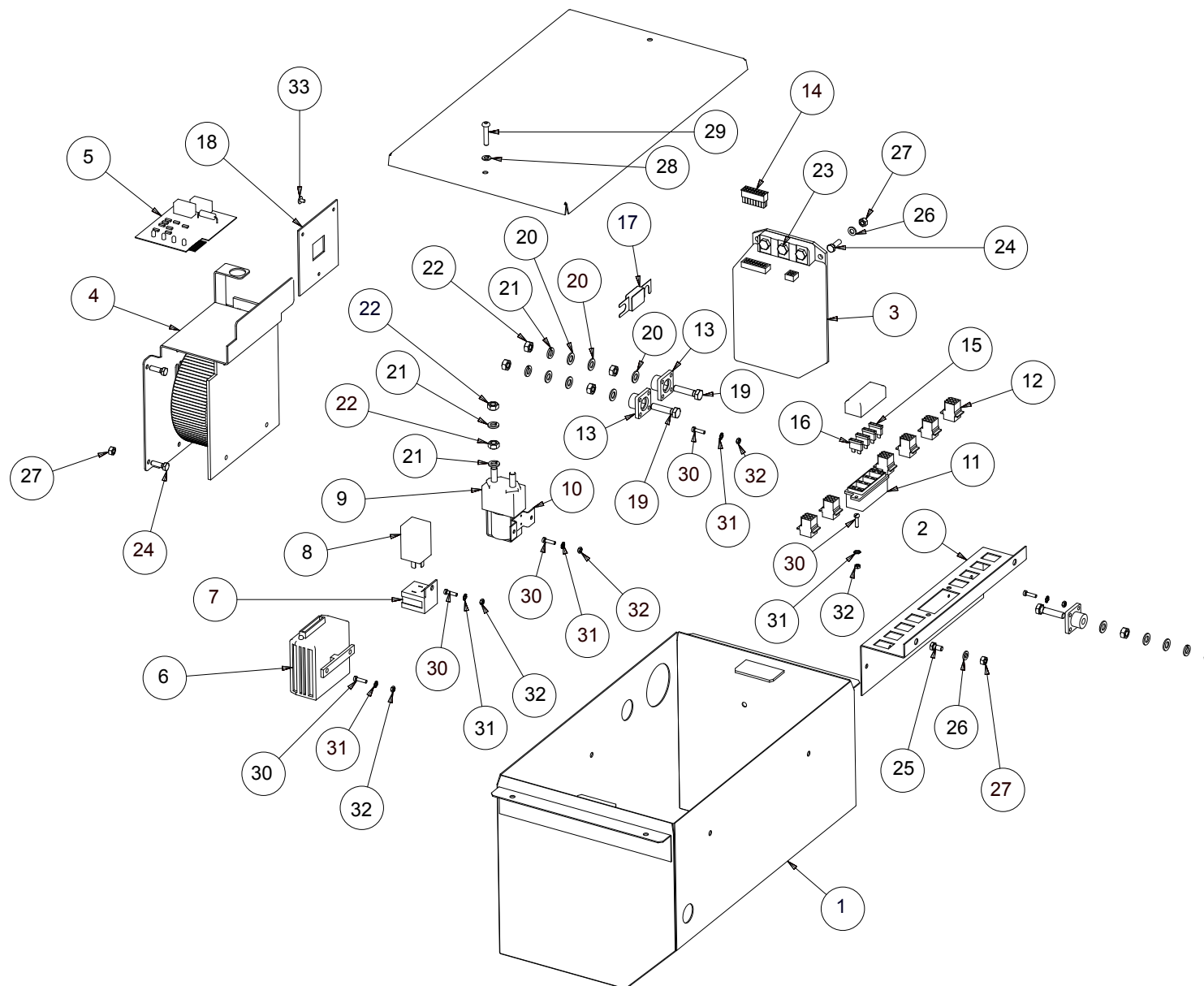
Typ/Type



Sida/Side

E11

Pos	Artikelnr/ Part No	Ant/ No	Ändrad/ Changed	Beskrivning	Description	
1	68047-0080	1		Lamphållare Övre Svart	Lamp holder Upper Black	
2	68055-0001	1		Bakljusplåt FZ	Tail light plate FZ	
3	68100-0452	1		Lamphållare Nedre Svart	Lamp holder Lower Black	
4	68021-0004	2		Distans	Spacer	
5	68100-0355	1		Strålkastare	Headlight	
6	44100-0000	1		Glas Baklykta	Glass Rear light	
7	44201-0000	4		Blinkers Avlång Gummi	Indicator Rubber Oblong	
8	68100-0630	1		Signalhorn 12V	Horn 12V	
9	45277-0000	1		Glödlampa 12V 10W BA15S	Bulb 12V 10W BA15S	
10	45034-0000	1		Glödlampa 12V 35/35W	Bulb 12V 35/35W	
11	45000-0011	4		Glödlampa 12V 5W	Bulb 12V 5W	
12	45035-0000	1		Glödlampa 12V 5W Sticksockel	Bulb 12V 5W Bayonett fitting	
13	45303-0000	1		Glödlampa 12V 4W BA9S	Bulb 12V 4W BA9S	
14	16106-0000	2		Mutter M6 FZB	Nut M6 FZB	
15	13106-0020	4		Sexkantsskruv M6x20 FZB	Hexagonal screw M6x20 FZB	
16	17106-0000	4		Planbricka 6,4x12x1,5 FZB	Plane washer 6.4x12x1.5 FZB	
17	17106-0011	6		Fjäderbricka 6,1x11,8x1,6 FZB	Spring washer 6.1x11.8x1.6 FZB	
18	17210-0018	2		Fjäderbricka 10,2x18,1x2,2 FZB	Spring washer 10.2x18.1x2.2 FZB	
19	16110-0000	2		Mutter M10 FZB	Nut M10 FZB	
20	16406-0000	2		Kupolmutter M6 FZB	Domed nut M6 FZB	
21	17106-0000	2		Planbricka 6,4x12x1,5 FZB	Plane washer 6.4x12x1.5 FZB	
22	13106-0035	2		Sexkantsskruv M6x35	Hexagonal bolt M6x35	
23	17950-2203	1		Borrskruv NR,3 (Drillwick)	Screw NR,3 (Drillwick)	
24	44205-0000	2		Blinkers Glas	Indicator glass	





Delar/Parts

**Elcentral
Electric box**

Chassis No

000-

Typ/Type



Sida/Side

E12

Pos	Artikelnr/ Part No	Ant/ No	Ändrad/ Changed	Beskrivning	Description	
1	69025-0001	1		Elecentral låda Svart med lock	Electric box, Black with lid	
2	68024-0082	1		Elcentralplåt Svart	Electric box, steel plate Black	
3	44460-0006	1		Motorstyrning Curtis	Controller, Curtis	
4	44480-0002	1		Batteriladdare	Battery charger	
5	44480-0004	1		Kretskort laddare	Printed circuit card charger	
6	68100-0404	1		Omvandlare 24-12V	Converter 24-12V	
7	68100-0375	1		Fäste Blinkersrelä	Fastening Blinkers relay	
8	68100-0380	1		Blinkerrelä 12 V EU	Blinkers relay 12V EU	
9	44460-2012	1		Kontaktor	Relay switch	
10	44460-2013	1		Monteringbygel	Assembly frame	
11	44301-1000	1		Säkringsdosa 4-polig	Fuse box 4-Pole	
12	44143-0211	6		Kontaktstycke Hona 9-Pol	Contact piece Female 9-Pole	
13	44460-2113	3		Nollplint	Screw	
14	44460-2114	1		Kontakt Molex 16-pol	Switch Molex 16-pole	
	44460-2115	8		Kabelskor till Molex kontakt	Cable terminal for Molex switch	
15	44401-0005	3		Flatsäkring 5 A	Fuse 5A	
16	44401-0010	1		Flatsäkring 10 A	Fuse 10A	
17	44400-0160	1		Säkring till motorstyrning 160 A	Fuse for motor controller 160A	
18	42636-0002	1		Gummigenomförning	Rubber grommit	
19	13108-0035	3		Sexkantsskruv M8x35 FZB	Hexagonal screw M8x35 FZB	
20	17108-0000	9		Planbricka 8,4x16x1,5 FZB	Plane washer 8.4x16x1.5 FZB	
21	17208-0014	7		Fjäderbricka 8,1x14,8x2 FZB	Spring washer 8.1x14.8x2 FZB	
22	16108-0000	10		Mutter M8 FZB	Nut M8 FZB	
23	13108-0016	3		Sexkantsskruv M8x16 FZB	Hexagonal screw M8x16 FZB	
24	13106-0020	7		Sexkantsskruv M6x20 FZB	Hexagonal screw M6x20 FZB	
25	13106-0012	2		Sexkantsskruv M6x12 FZB	Hexagonal screw M6x12 FZB	
26	16304-0000	1		Låsmutter M4 FZB	Lock nut M4 FZB	
27	16306-0000	2		Låsmutter M6 FZB	Lock nut M6 FZB	
28	17206-0011	2		Fjäderbricka 6,1x11,8x1,6 FZB	Spring washer 6.1x11.8x1.6 FZB	
29	15306-0030	2		Insexskruv M6x30	Socket head cap screw M6x30	
30	13104-0016	4		Sexkantsskruv M4x16 FZB	Hexagonal screw M4x16 FZB	
31	17204-0007	2		Fjäderbricka M4 FZB	Spring washer M4 FZB	
32	16304-0000	4		Låsmutter M4 FZB	Lock nut M4 FZB	
33	17810-4014	3		Blindnit	Blind rivet	



Delar/Parts

Parkeringsbroms/wire
Parking brake/wire

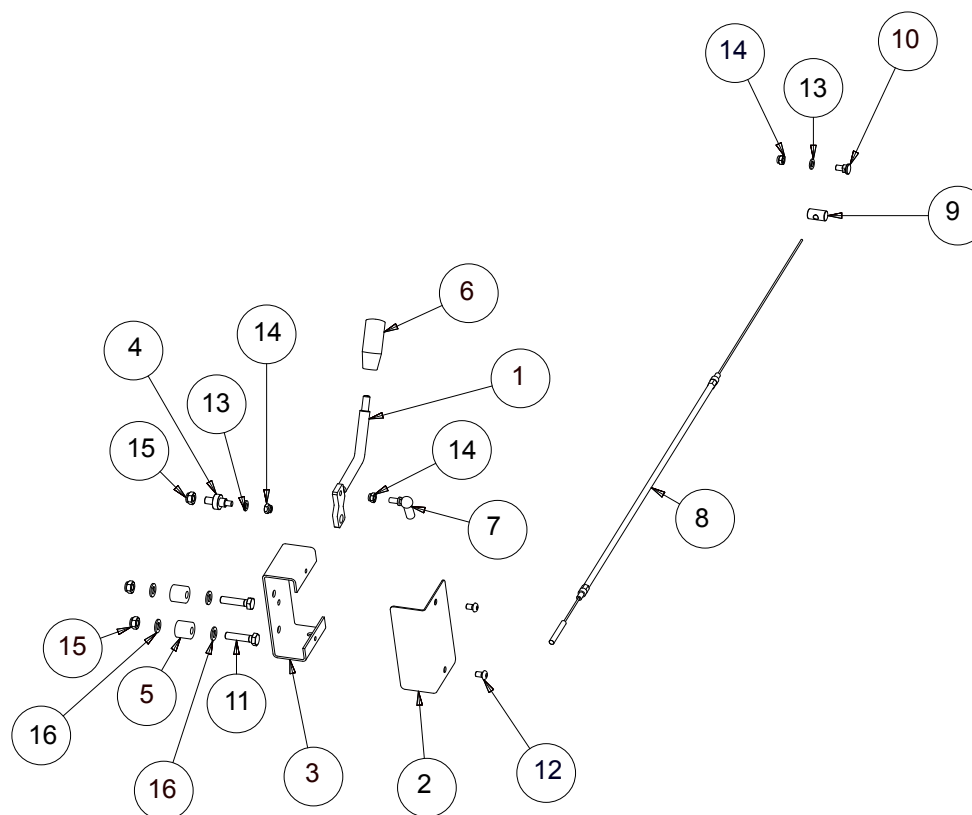
Chassis No

000-

Typ/Type

NORSJÖ Electronic
Carrier

Sida/Side

E13



Delar/Parts

**Bromsslang
Brake tube**

Chassis No

000-

Typ/Type

NORSJÖ
*Electronic
Carrier*

Sida/Side

E14